

# DEVICES

ADs ANCHOR DEVICES  
UNI 11578:2015



ANCHOR DEVICES

# ECOLINE ANCHOR

## ECOLINE

### C

UNI 11578:2015



LOW  
VISUAL  
IMPACT

The products in the ECOLINE C range have been designed to offer the best value for money



BEST PRICE

and ensure a low visual impact, being optimal for use in residential environments.

It is possible to create lines from 5 to 20 m.



2 OPERATORS

PROJECTS  
FOR USE WITH  
UP TO TWO OPERATORS



STAINLESS  
STEEL

DEVICES MADE ENTIRELY  
IN STAINLESS STEEL

Thanks to their deformability, the products in the ECOLINE C range have been designed to reduce loads on the bearing structure.

---

## STRENGTHS

---

## CHARACTERISTICS



CIVIL SECTOR

SPECIFIC DEVICES FOR SHINGLES, ROOF TILES, AND MASONRY



EASY ASSEMBLING

EASY AND INTUITIVE INSTALLATION



10-YEAR WARRANTY



PRODUCT LIABILITY

TEN-YEAR GUARANTEE OF DURABILITY  
PRODUCT LIABILITY INSURANCE COVER



CERTIFIED QUALITY

ANCCP CERTIFIED IN ACCORDANCE WITH THE LAW UNI 11578:2015

The products of the ECOLINE C range are optimal for traditional bearing structures with shingles, roof tiles and masonry.

The ECOLINE C devices are guaranteed for 10 years against manufacturing defects and certified according to third-party notified body legal regulations.

## APPLICATIONS

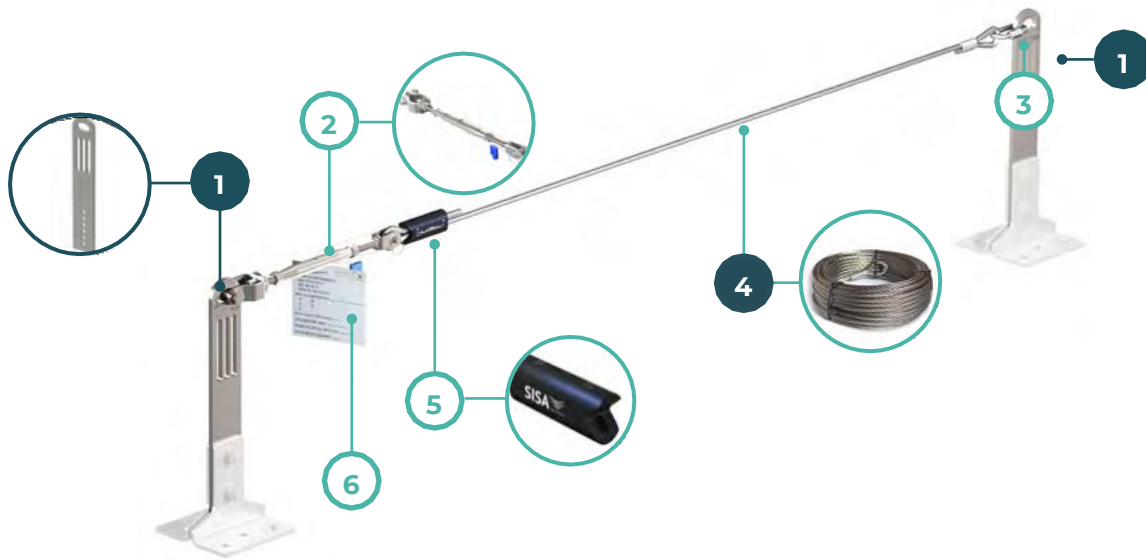
## QUALITY

# ECOLINE ANCHOR

## ECOLINE

### C

UNI 11578:2015



## 05-10 KIT

### ECOLINE 05-10 KIT

ECO  
ECO-00-0001

+

BEND  
ECO-02-0001

+

CABLES  
XFI-60-8005/10



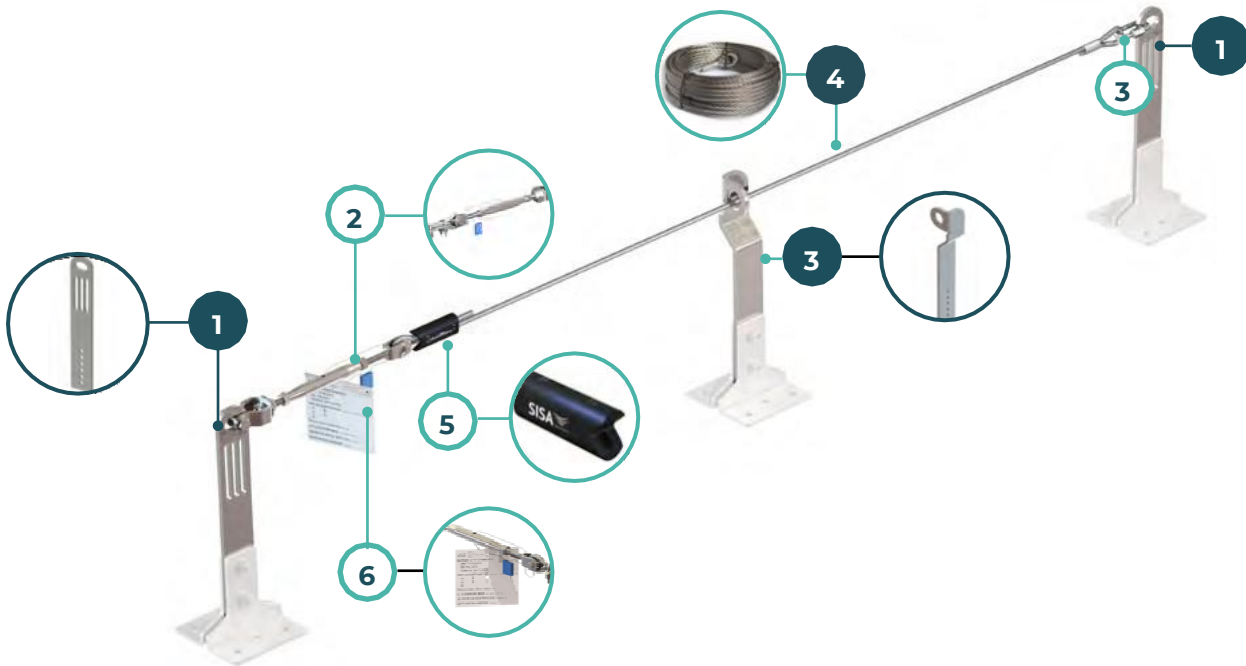
ECOLINE 05-10 Kit containing the following components:

STAINLESS-STEEL DEFORMABLE HEAD BRACKETS NOT INCLUDED IN CODE (1), STAINLESS STEEL TENSIONER (2), CONNECTOR (3), 5-10 M STEEL CABLE NOT INCLUDED IN CODE (4), THIMBLE AND CLAMPING TO CLOSE ELEMENT (5), IDENTIFICATION PLATE AND LEAD FOR SEALING (6).

The end plates of the device have been designed to deform, supporting the deformation of the cable in the event of a fall and reducing the kinetic energy resulting from a fall, limiting the loads that are generated at the end of the system and in accordance with the bearing structure.

The tensioner is equipped with a ring that helps the installer to properly tension the cable.

Base plates, ends and cable not covered by OMN-00-0001.



# 15-20 KIT

## ECOLINE 15-20 KIT

ECO  
ECO-00-0001

+

BEND  
ECO-02-0001

+

INTERMEDIATE  
ECO-04-0001

+

CABLES  
XFI-60-8015/20



ECOLINE 15-20 Kit containing the following

DEFORMABLE HEAD BRACKETS IN STAINLESS STEEL NOT INCLUDED IN CODE (1), STAINLESS STEEL INTERMEDIATE DEFORMABLE BRACKET NOT INCLUDED IN CODE (3), STAINLESS STEEL TENSIONER (2), CONNECTOR (3), 15-20 M STEEL CABLE NOT INCLUDED IN CODE (4), THIMBLE AND CLAMPING ELEMENT TO CLOSE (5), IDENTIFICATION PLATE AND LEAD SEALING (6).

The end plates of the device have been designed to deform, supporting the deformation of the cable in the event of a fall and reducing the kinetic energy resulting from a fall, limiting the loads that are generated at the end of the system and in accordance with the bearing structure.

The tensioner is equipped with a ring that helps the installer to properly tension the cable.  
Base plates, ends and cable not covered by OMN-00-0001.

# ANCHOR DEVICES

## ECOLINE C

UNI 11578:2015

### ECO-00-0001

#### Complete ECO KIT



ECO kit containing the following components:

STAINLESS STEEL TENSIONER, CONNECTOR, THIMBLE AND CLAMPING ELEMENT TO CLOSE, IDENTIFICATION PLATE AND SEALING LEAD (6).

The tensioner is equipped with a ring that helps the installer to properly tension the cable.

Deformation from the end elements allows it to be installed without the use of an energy absorber.

**Material:** Stainless Steel  
**Dimensions:** 150 x 150 mm  
**Weight:** 2.1 Kg

### ECO-02-0001

#### END ROOF TILES DEFORMABLE BEND



A pair of Type C end devices designed to function in the event of a fall. The holes in the lower part ensure an adequate adjustment in relation to the roofing block.

**Material:** Stainless Steel  
**Dimensions:** 400 x 60 x 8 mm  
**Weight:** 2.1 Kg

### ECO-04-0001

#### INTERMEDIATE



Intermediate element for Type C devices designed to deform in the event of a fall. The holes in the lower part ensure adequate adjustment in relation to the roofing block.

Its use is required when the length of the cable is more than 10 m.

**Material:** Stainless Steel  
**Dimensions:** 400 x 60 x 8 mm  
**Weight:** 2.1 Kg

### STAINLESS STEEL CABLE Ø 8



Cable Ø 8 mm in 316 stainless steel consisting of 7x19 strands, which permits manoeuvrability at height, with a length from 5 to 20 m. The operator connects their carabiner to the cable in order to move safely with maximum ergonomics.

**Material:** Stainless Steel  
**Dimensions:** 7 x 19 mm | from 5 to 80 m

**ECO-20-3000**

FLAT BASE PLATES



Pair of flat base plates to be combined with the ECO-02-0001 ends to facilitate the fastening of the Type C Ecoline device to the bearing structure.

**Material:** Stainless Steel  
**Dimensions:** 150 x 150 x 6 mm  
**Weight:** 2.1 Kg

**ECO-20-4000**

DOUBLE-INCLINATION BASE



Pair of double inclination bases, with an angle of around 150°, to be combined with the ECO-02-0001 ends to facilitate the attachment of the Type C Ecoline device to the bearing structure.

**Material:** Stainless Steel  
**Dimensions:** 150 x 150 x 6 mm  
**Weight:** 2.1 Kg

PLATES

**ECO-20-5000**

MONO-TILT BASE PLATES



Pair of inclined bases, with an angle of about 17°, to be combined with the ECO-02-0001 ends to facilitate the attachment of the Type C Ecoline device to the bearing structure.

**Material:** Stainless Steel  
**Dimensions:** 150 x 150 x 6 mm  
**Weight:** 2.1 Kg

**ACC-04-0001**

FUNCTIONAL STOP / DELIMITER



An element which, when installed on the cable via the clamps in the package, limits the use of a portion of the Type C device.

**Material:** Stainless Steel  
**Dimensions:** 104 X 100 X 50 mm thickness 2 mm  
**Weight:** 1 kg

**ACC-01-0001  
 ACC-02-0001  
 ACC-02-0002**

UNIVERSAL DEVICE  
 PLATE



Plates to be applied to Type C devices and the first Type A device that the operator encounters in the elevated work area.  
 Plate to be applied in line with the access points, where it is possible to see that the viewing capabilities have been properly set up.  
 Plate to be applied in line with the access points, where it is possible to see that the viewing capabilities have been properly set up.

**Material:** Aluminium  
**Dimensions:** 120 x 120 mm / 115 x 110 mm / 200 x 300 mm  
**Weight:** 0.1 kg / 0.1 kg / 0.2 kg

DEVICES  
DEVICES

ECOLINE



UNI 11578:2015



WE PROTECT LIFE  
SAFETY AT HEIGHT



SITE INSPECTION  
OUR WEBSITE

INFO@SISA-SRL.COM TELEPHONE: +39 035 877130  
REGISTERED OFFICE: VIA URINI 16, 25031 CAPRIOLO (BS) ITALY  
MAIN OFFICE: VIA PALAZZOLO 109, 25031 CAPRIOLO (BS) ITALY